

CAMOSUN COMMUNITY ASSOCIATION

NEWSLETTER
FALL 2012

www.CamosunCommunityAssociation.com



The Camosun Community Association is a non-profit society with the mandate to promote, facilitate, support and undertake activities that will enhance the quality of life for residents in the Camosun Community within Saanich.

Food Self-Sufficiency

To procure local, organic food is fashionable. The idea is to reduce dependency on outside sources.

As a result:

- farm markets, street markets in season, organizations to cooperative production, distribution, sales of produce, baked goods, juices, dairy and meats flourish in the Greater Victoria, the Cowichan and the southern Gulf Islands;
- there is a some development of community and backyard gardens throughout the Region;

This is a great beginning, but is it adequate to ensure regional food self-sufficiency?

Continued on Page 5 ...

In This Issue:

- * Jubilee Hospital Master Campus Plan
- * Backyard Chicken Tour
- * Emergency Preparedness Workshop
- * CCA AGM - January 24th 7pm
- * CCA on Facebook & Twitter
- * Land Use Updates
- * Bowker Creek News
- * Camosun College Cell Tower

Emergency Preparedness

Is your family ready when it hits?

Preparedness Workshop & AGM
Thursday, January 24th - 7pm
Lansdowne School

When disaster strikes, our chances of staying safe, healthy and comfortable are much better if we are prepared. Individual and families are encouraged to be prepared to survive on their own for up to seven days after any type of disaster. Terrance Berscheid, from the Saanich Emergency Program, will speak on what types of disasters we may expect in Saanich, and a few ways to become prepared including preparing a grab and go bag, and food and water supplies.

Free Workshop. Free Parking. Coffee & Cookies served.

Following the presentation, the CCA will hold its annual elections for board members. We are looking for new community members to get involved and help with local community activities and interests. Have an interest or issue you would like to pursue?

- * Summer Picnic Planning
- * Newsletter Editor
- * Traffic Safety
- * Emergency Preparedness
- * Bowker Creek Restoration
- * Graffiti Removal

If you are interested in getting involved in your community, please come out to the AGM and emergency preparedness workshop.

Land Use in the CCA

The CCA is involved in many land use proposals and projects in our neighbourhood to ensure the best interests of our community are being met. We work with a wide range of parties, including individual developers, large institutions, and planners from the Municipality of Saanich. Below is an outline of some recent land use projects in the CCA. If you have any questions/ concerns about land use, or would like to become involved, please contact Caleb Horn at horn.calebj@gmail.com

Hillside Liquor Store

The Hillside Liquor Store at 3201 Shelbourne has applied to rezone an adjacent residential property at 1664 North Dairy Road to allow for consolidation of lots and expansion of the current commercial property. No increase in retail space is proposed, but the additional property would be used to accommodate better storage facilities while improving parking. Neighbourhood reaction to this proposal has been mixed. Some residents are happy with improvements to ease traffic flow at the site, but others are concerned with the potential impacts of commercial encroachment into a residential area. More information can be found on the Saanich or CCA website.

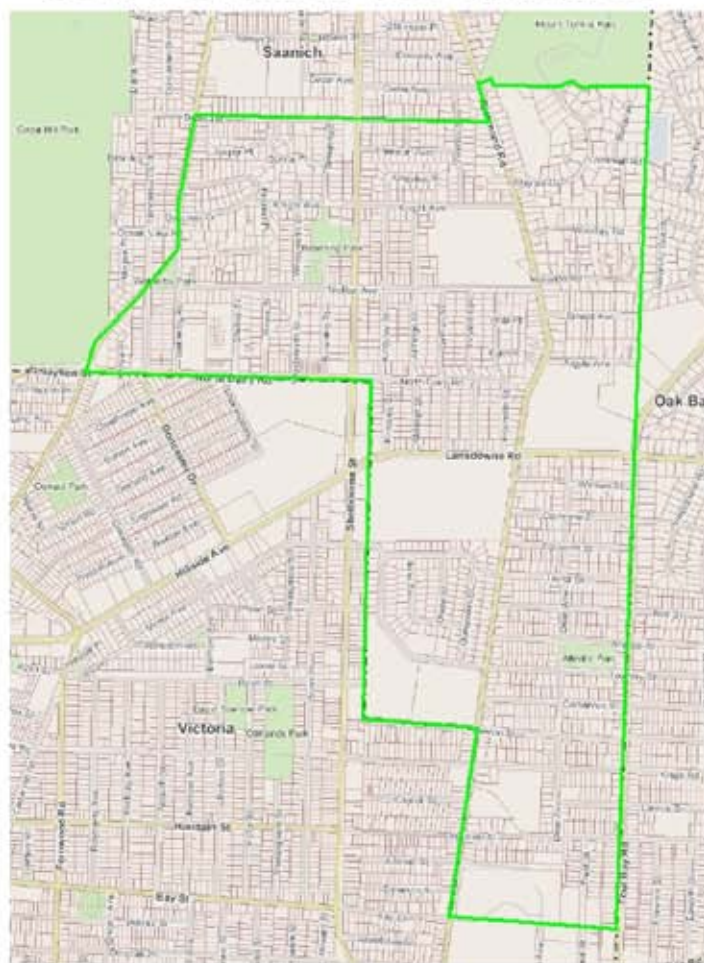
1535 Oak Crest

An application to rezone this property to allow for a duplex was rejected at a Saanich committee of the whole meeting on June 18th, 2012. The applicant is moving forward with construction of an energy-efficient "passive house" that will not require a rezoning.

1806/1810 Newton Street

A proposal to subdivide these two lots to allow for an additional residential lot was approved by Saanich at a public hearing on October 16th, 2012.

Camosun Community Association Boundaries



CCA Board of Directors

President.....	Michael Crowe.....	michaelc@benefits.bc.ca
VP/Membership.....	Lorne Neil.....	lorneneil@gmail.com
Treasurer.....	Tom Celuszak.....	tom.celuszak@telus.net
Secretary.....	Clint Lalonde.....	clint.lalonde@gmail.com
SCAN Rep/Food		
Security.....	Yves Bajard.....	yves@bajard.net
Traffic Safety/Graffiti....	Tim Janzen.....	issuesman@gmail.com
Land Use/Newsletter		
Distribution.....	Caleb Horn.....	horn.calebj@gmail.com
Director at Large.....	Anna Tran.....	tranna.ca@gmail.com
Director at Large.....	Andrea Gleichauf..	freewind@shaw.ca
Camosun Students..... Open		

**THRIFTY
FOODS™**



**VICTORIA FAMILY
CHIROPRACTIC**

Master Campus Planning at the Royal Jubilee Hospital

The Vancouver Island Health Authority (VIHA) is in the final stages of completing a Master Campus Plan (MCP) for the Royal Jubilee Hospital (RJH) campus. The Plan is being developed to fulfill the terms of a Master Development Agreement (MDA) between the City of Victoria and VIHA, and to create a high-level framework for future development on campus to 2030. Although the MDA is between VIHA and the City of Victoria, the campus also contains lands under the jurisdiction of the District of Saanich. To ensure that both jurisdictions are represented, and to create a comprehensive document that takes the whole campus into account, planning staff from the District of Saanich, Camosun Community Association and Friends of Bowker Creek Society have been involved in its development. The North Jubilee and South Jubilee Neighbourhood Associations within the City of Victoria have also been involved in the consultation process.



The RJH campus provides specialized services and emergency care, as well as outpatient and inpatient services and core specialties for the residents of Victoria and Vancouver Island. The future development of the site is an important component of VIHA's overall strategic plan for health service delivery throughout the region, especially as healthcare continues to evolve. The MCP is intended to provide a planning framework to guide future development for the Hospital campus as well as offer design guidelines that will guide the physical development and character of the campus, specifically its buildings, landscape, circulation, public realm, urban design and infrastructure.

The goal of the Plan is to create a campus environment that will support current and future generations and serve as a key part of the community and the region. This includes providing a safe, healthy and accessible campus for all patients, staff and visitors, with improved connectivity with surrounding communities. In addition, the Plan aims to demonstrate best practices in urban design principles in the development of open spaces, buildings and structures as well as demonstrate sustainable best practices in building design, storm water management, energy and waste management.

Article submitted by Jani Urquhart, of Planning and Community Engagement at VIHA. The CCA has been involved in the Royal Jubilee Hospital Master Campus Plan visioning process since 2008. If you have any questions about the Master Campus Plan, please contact Caleb Horn at horn.calebj@gmail.com



Neighbourhood Resilience

Want to get involved and engaged but don't know how to go about it?

There is no shortage of Victorians who care about their community and want to help. Change can appear daunting, but many people don't know that seemingly small things have value. For example, Calgarians instituted MONday (Meet Our Neighbours Day), weekly informal gatherings of residents. People also began holding their parties in their front yards, rather than around the back, as a way of encouraging their neighbours to stop by and join in.

The idea is simple: What if everyone went out for a walk at the same time and started to meet, introduce themselves, and visit with each other? Getting to know your neighbours not only feels good, but it can also be an incubator for good ideas about improving the community. Residents who know each other also tend to look out for one another, creating a safer and healthier environment.

Want to share your neighbourhood success story?
please email Anna Tran at tranna.ca@gmail.com.

Camosun College Cell Tower

Telus and WindMobile have applied to extend the telecommunications tower on the Fisher Building at Camosun College from 18.3m to 24.4m in height. This will be done to enhance signal strength and to accommodate additional wireless antennas. Many neighbouring residents have been unhappy with the amount of cell antennas at the site and are worried about the addition. The effects of such non-ionizing electromagnetic radiation on human health are not well understood due to contradictory reports. Although the proposed tower complies with Industry Canada safety codes, residents have expressed concern with Canada's relatively lenient guidelines when compared to many international codes. As such, the CCA does not support the tower extension at this time.

Shelbourne Valley Action Plan - Open Houses

Mobility and Land Use: Concepts and Ideas for the Future of the Shelbourne Valley

Both the transportation and urban design consultant reports have been completed, and now it's time to provide Saanich staff with valuable feedback prior to the first draft of the Shelbourne Valley Action Plan. This plan will dictate what growth should or shouldn't look like in the Valley and what design options are preferred for Shelbourne Street. A portion of the Shelbourne Corridor, from Derby to North Dairy, lies within the Camosun Community Association and big changes are recommended in the consultant reports for this section. Please visit one of the upcoming open houses to express your thoughts and evaluate the different conceptual options prepared by staff. Feedback will be used by Saanich in their preparation of the Action Plan's first draft.

Monday November 19

4:00 to 8:30 p.m.

Lambrick Secondary School Gym

Monday and Tuesday, November 26 and 27

4:00 to 8:30 p.m.

Cedar Hill Golf Course Club House

If you're unable to attend an Open House a virtual Open House will be available on line at Saanich.ca along with an on line survey.



VICKI SANDERS
Saanich Councillor

"Never doubt that a small group of thoughtful, committed citizens can change the world. Indeed, it is the only thing that ever has."
Margaret Mead (1901 - 1978)

(250) 592-0865

www.vickisanders.com email: vicki_sanders@telus.net

Councillor.Vicki.Sanders@facebook.com

Twitter: @SandersVicki

Food Self-Sufficiency continued from Page 1 ...

First we need to examine critically if and to what extent we may need to become self sufficient: we get abundant food at many stores near our homes, wherever we live. Prices vary, but most people (with exceptions for the lower incomes) can afford the essentials. Yet, that food often comes from remote areas: , Chile, Peru, New Zealand, Australia, etc..

Now please consider what would happen if (and when) a major or medium earthquake shakes Vancouver, Richmond, Delta, Tsawwassen and the Puget Sound? If major floods hit the Fraser and the creeks and torrents south of the border, down to Seattle and Tacoma? If and when oil prices skyrocket and push foreign procurement of food beyond the affordable?

Are such events science fiction and imagination? If not, can current production, distribution and procurement of local food feed all of us on the Island? Otherwise, how and from where could food reach us? At what cost if it reaches us? Would it not be safe to plan means to avoid the crisis?

The problem is Island-wide. No organization addresses it. A worthwhile challenge, would be to start something practical in our Camosun neighbourhood. Please get in touch with Yves Bajard if you are interested and willing to take part.

Yves Bajard, yves@bajard.net, 250-598-4610

Neighbourhood Traffic Issues

In and around our neighbourhood there are six major routes: Foul Bay, Richmond, Shelbourne, Cedar Hill, Lansdowne/Hillside and North Dairy. Between them, residential areas are crossed every day by cars and trucks. Drivers in a hurry want to avoid red-lights and often drive carelessly, regardless of children playing, and not respecting stop signs. Strangely enough there are not as many accidents as could be feared. These residential areas are no longer safe. Some residents have asked for help from the CCA. As a result, we propose the following:

Neighbourhood Traffic Issues continued ...

1. Creation of a working group of volunteers (the Traffic Group) focused on this issue.
2. Preparation by the group of a questionnaire about speeding, non-respect of stop signs, abrupt turning; ideas for solutions; instructions for filling it on line/by hand.
3. Distribution of the questionnaire to residents; and availability from the CCA Website.
4. Processing of the questionnaires by the group into a statement of traffic issues identified and of solutions proposed.
5. Public meeting to present the findings of the questionnaire, define solutions and outline an action plan.
6. Finalization of action plan by the group.
7. Publication of the action plan.
8. Implementation of the action plan.

We invite concerned residents to join the working group. Please contact Yves Bajard, yves@bajard.net or 250-598-4610

Summer Picnic Fun

Celebrating Richmond School

The heavy rains held off just long enough for the CCA family picnic at Richmond School playground. A big thanks to Thrifty Foods, Coast Capital Savings, Hillside Liquor Store, and Island Sleep Health Services for their generous support in making this event possible for our community. See you next summer!

*Ida Chong welcomes
the Camosun Community Association
to Oak Bay-Gordon Head*



Ida Chong
MLA Oak Bay-Gordon Head

Gordon Head Office: 1-250-472-8328
Oak Bay Office: 1-250-598-8398
Email: Ida.Chong.MLA@leg.bc.ca
www.idachongmla.bc.ca

Tour de Coops

Do you or someone in your neighbourhood own backyard chickens?

Tour de Coops is a self-guided tour featuring backyard chickens and chicken owners throughout your neighbourhood - getting to know your neighbours while learning and sharing urban chicken keeping ideas. The event is meant to be a free and fun community event for you, your whole family and all your friends.

We are looking for backyard chicken owners who are interested in opening their yards for a day so neighbours can see their coops and meet their chickens. Early submissions are highly appreciated!



Want to register your chicken or flock, be in the loop, and/or help create a walking Tour de Coops map for the upcoming Spring 2013? Contact Anna Tran at tranna.ca@gmail.com or drop by at one of our Board Meetings held on the second Thursday of every month (7-9pm) in Learning Room A, Patient Care Centre, Royal Jubilee Hospital, 1952 Bay Street.

SCAN Workshops

The Saanich Community Associations Network (SCAN) is organizing several workshops on topics of high interest in Saanich. The first two workshops are already in their last stages of organization: They will be held as follows:

- Location: Pearkes Arena near Tillicum Centre
- Date: December 1, 2012; Time: 9:00am – 4:00pm

Themes :

1. *Protecting Urban Forests – Richard Dominy & Harald Wolf*
2. *Traffic Safety – Rob Wickson/CARS John – Dave*

A third workshop is scheduled for early next year on Community Engagement (probably together with Healthy Saanich Advisory Committee - HSAC) – to be held in January or February 2013

For more information on these workshops please contact Yves Bajard at yves@bajard.net or 250-598-4610

Preparation for Earthquakes

BC just experienced two significant earthquakes west of Haida Gwaii. While this is far away, we are no safer than Haida Gwaii. Being in the Cascadia Subduction Zone, extending from Cape Scott to Northern California, we can be shaken dangerously at any time. Our options are:

1. Ignore it and hope for the best;
2. Follow general public and private website recommendations for surviving a catastrophic event (water, power, sewerage, food and other services cut off for some time, destructions to home)

We believe we should make them practical for our neighbourhood. We, at the Camosun Community Association invite residents of our area to join a CCA working group that will create a neighbourhood-wide earthquake preparation process. A worthwhile challenge, isn't it?

For more information and to get involved in the working group, please contact Yves Bajard, yves@bajard.net, 250-598-4610

NOW OPEN

Mount Tolmie Market

Your Local Convenience Store

- *Snacks *Drinks *Treats *Grocery
- *Baked Goods *Sandwiches
- *Fax/Copying Services *Stamps
- *Newspapers & More



Unit A - 3517 Richmond Road Ph: 250 590 8460
(Richmond Rd @ Mayfair Drive - Bottom of Mount Tolmie Park)

LIKE US on Facebook.com/MountTolmieMarket

A Regional White Elephant

The CRD is engaged in a costly (\$783 million) regional sewage project (secondary treatment): several treatment stations, sludge piped to Hartland and turned into energy. The cost implies hundreds of dollars tax increase per house. Let us examine this coldly.

1. The project stems from a demand by a long gone BC Minister of the Environment, who apparently feared that tourists would desert Victoria because our only sewage treatment is primary screening.
2. It goes against documented conclusions by scientists and professionals that the project is not justifiable: present release presents no danger to human health and marine life.
3. It ignores that (a) secondary treatment cannot eliminate all dangerous chemicals and pharmaceutical contents; (b) an inadequate regional storm drainage frequently overflows into the sewers; (c) source control could greatly reduce sewage contamination; (d) other means can further reduce sewage (separating grey and black waters for homes and industry and using grey waters for irrigation)
4. Arguments against scientists, professionals and elected representatives, who call for a review of the project, is that senior governments might withdraw financial support, that the project is unavoidable and federal law demands secondary treatment in large cities. This interferes with municipal prerogatives. The CRD should demand exception.

If you want to act directly to block the "White Elephant" in its tracks, please look at the web site of the Association for Responsible & Environmentally Sustainable Sewage Treatment <http://aresst.ca> and take desired action.

*Yves Bajard Board member, CCA yves@bajard.net
250-598-4610*

Bowker Creek Update

The Bowker Creek Blueprint, (a 100 year action plan to restore the Bowker Creek watershed) has now been endorsed by all three municipalities; Victoria, Saanich & OakBay.

Some of the highlights of the successes of the Bowker Creek Initiative are the 2012 CRD Eco Award for integrated watershed management, a 5 min educational YouTube video on the problems that Bowker Creek & all urban creeks face, as well as the recent award of \$738000 of gas tax fund money to restore the creek along Oak Bay High school & to create a learning opportunity for students.

The BCI coordinator position has managed to obtain over one million dollars in grants & funds from out-side agencies to assist the municipalities in their management of Bowker Creek.

For more info go to www.bowkercreekinitiative.ca



MLA Victoria-Swan Lake
Rob Fleming

Working for you

1020 Hillside Avenue
250 360.2023
rob.fleming.mla@leg.bc.ca
www.robflamingmla.ca



Tel: 595-8924
Cell: 360-6479

SCOTIA PAINTING
1621 KNIGHT AVE., VICTORIA, B.C. V8P 1L2

Interior • Exterior & Wall Coverings • since 1983

KEN HORN

Newsletter Distribution

Newsletter distribution is carried out by a dedicated group of volunteers including 10 neighbourhood managers and numerous delivery people. Newsletter delivery takes place no more than twice a year and involves distributing a small bundle of newsletters in your neighbourhood. We are currently short in a number of areas and would love to hear from people who may have an hour to spare twice a year and volunteer as a carrier. If interested in any level of newsletter delivery, please contact Caleb Horn at horn.calebj@gmail.com

Advertising in this Newsletter

At \$35 for a business card size ad, your business can contribute to covering the cost of publishing an issue of the newsletter. The CCA newsletter is published two times per year and is distributed to approximately 2,000 households. For questions, or to place an advertisement, please contact Lorne Neil at 250-216-2755 or lorneneil@gmail.com.



Membership Fees

We need and appreciate your support. Your \$10 contribution (per household) can be submitted using the form below. All membership funds raised by the CCA are re-directed back into your community and help cover community events, newsletter publication and web site costs.

Connect with CCA on Facebook & Twitter

Visit CCA web site at www.camosuncommunityassociation.com and click on the Facebook and Twitter icons on the homepage.



Michael Crowe

Group Insurance

Dental Care
Extended Health
Disability Insurance
Group Life Insurance
Accident Insurance
Group Pension / RRSP
Flexible Spending Accounts



206-2750 Quadra St • Victoria BC V8T 4E8 • Phone: 250-380-1990 • Toll Free: 866-380-1990



CCA MEMBERSHIP FORM

☐ RENEWAL
☐ NEW

Name: _____ Address: _____

Phone: (____) _____ Email Address: _____

I would like to volunteer with:

- | | | |
|---|---|---|
| <input type="checkbox"/> Summer Picnic | <input type="checkbox"/> Graffiti Removal | <input type="checkbox"/> Traffic & Safety |
| <input type="checkbox"/> Newsletter Delivery | <input type="checkbox"/> Block Watch | <input type="checkbox"/> Land Use |
| <input type="checkbox"/> Emergency Preparedness | <input type="checkbox"/> Bowker Creek Restoration | <input type="checkbox"/> Other: _____ |

Send your payment and completed form to:

3030 Dean Ave. Victoria, BC V8R 4Y9

Cheques payable to: Camosun Community Association

\$10 per year